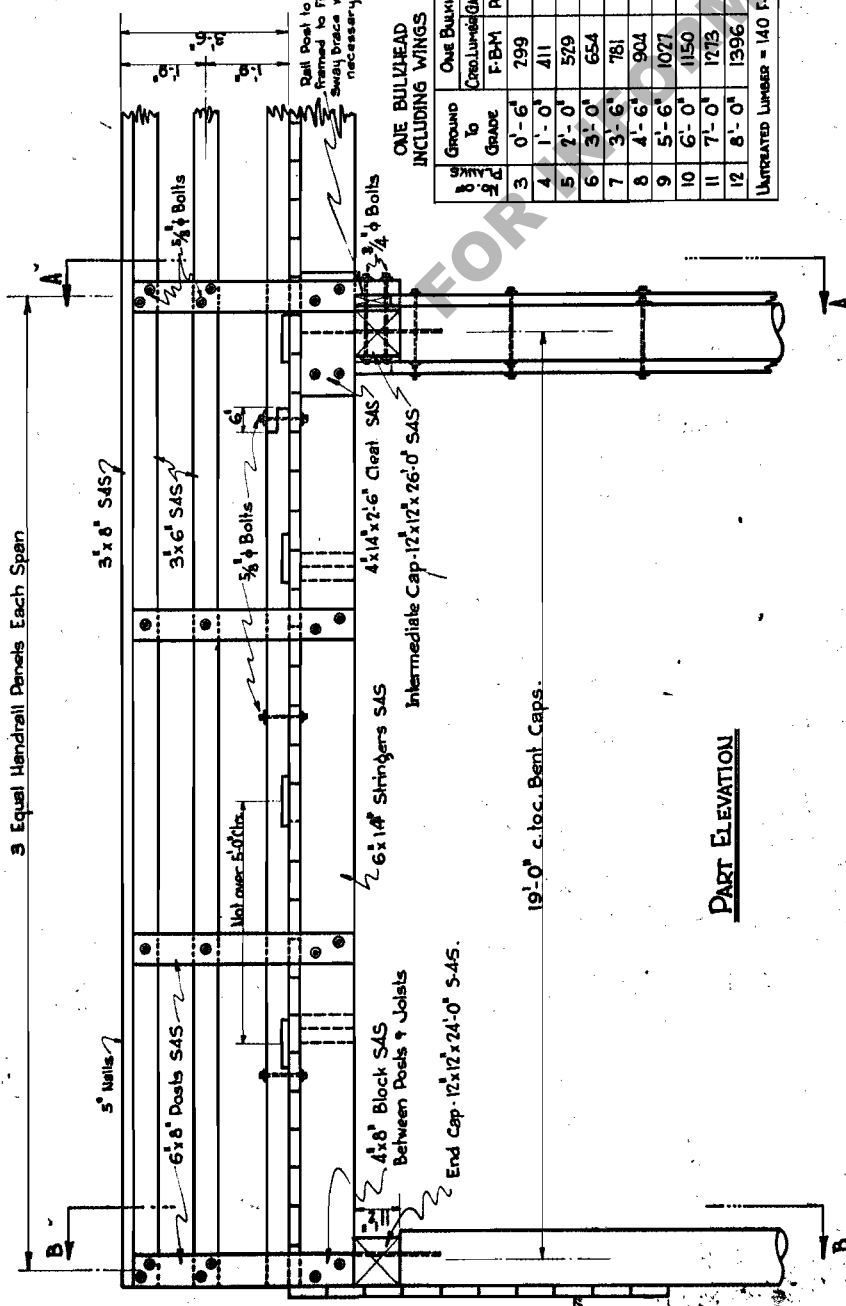


3 Equal Handrail Panels Each Span

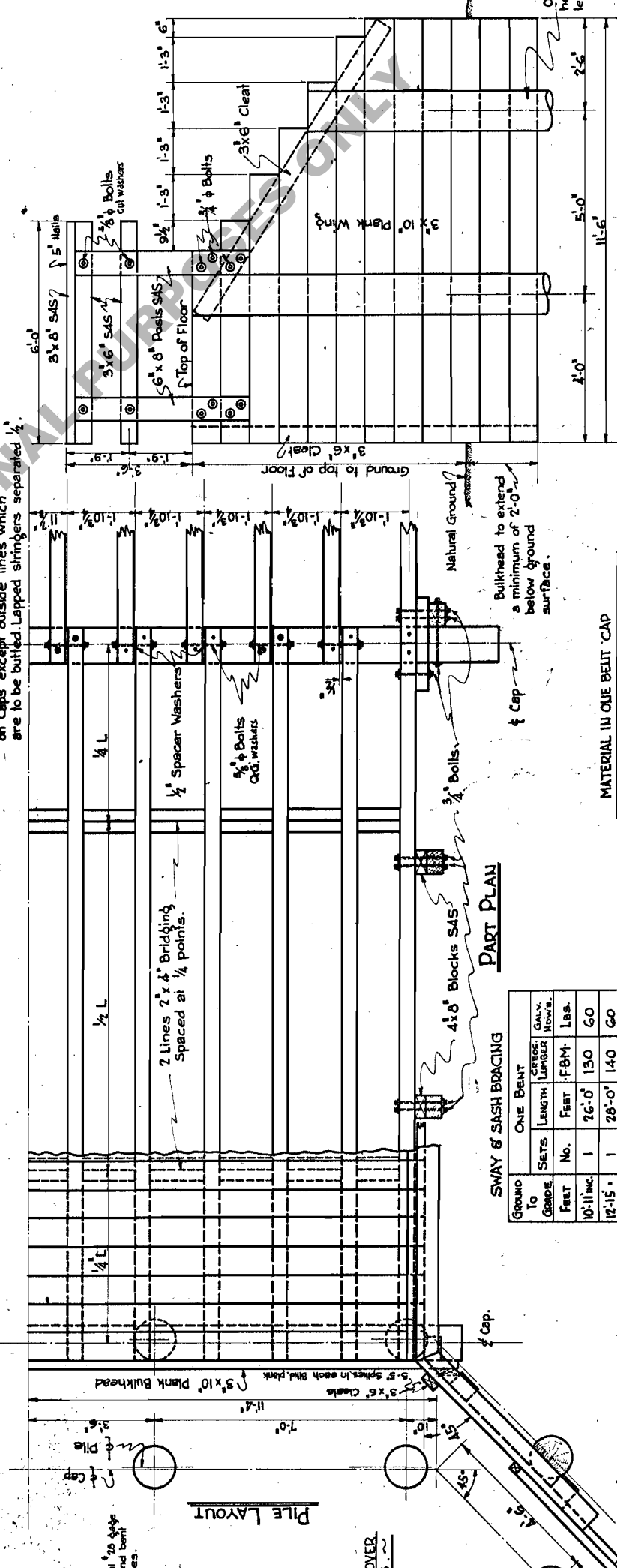


**PART ELEVATION**

**HALF SECTION B-B**

**HALF SECTION A-A**

Notes: Stringers to have full bearing on caps except outside lines which are to be built. Lapped stringers separated 1/4".



**PART PLAN**

**DIMENSIONS & QUANTITIES FOR SUPERSTRUCTURE**

SPAN LENGTH FEET	ONE PANEL COMPLETE		EACH ADDITIONAL PANEL	
	UNPAINTED LUMBER	F.B.M. POUNDS	UNPAINTED LUMBER	F.B.M. POUNDS
19	350	3350	314	3280
				211

Fasten Bulkhead and Wing Planks to Piles with 60d. wire nails, 2 in each plank to each pile

GENERAL NOTES: All Piles and Timber except Handrailing and Handrail Posts to be Creosoted. Standard 16" Full Cell Treatment. All lumber to be rough except as noted. All hardware to be hot dip galvanized, except Floor Plank Nails and Stringer Drift Pins. Piles shall be driven to have a bearing capacity of 10 tons each as determined by the formulas given in the Louisiana Highway Commission Specifications of 1929. Handrailing to be painted three coats of White Lead and Linseed Oil.

Span designed for 14-10 Loading.

Caution: Upon cutting any piece of Creosoted Material some shall immediately be painted with Creosote Oil and roofing pitch in accordance with Specifications.

**STANDARD**  
**TIMBER TRESTLE WITH SURFACE TREATED DECK**  
**21'-0" ROADWAY 19'-0" SPAN**  
**LOUISIANA HIGHWAY COMMISSION**  
 Baton Rouge, La.

*Notes*  
 12'-11"

**DETAIL OF WING**  
 (View Normal to Face)

**MATERIAL IN ONE BENT CAP**

Item	Quantity	Weight (Pounds)
End Bent Cap	2,88	19
Intermediate Cap	512	19

Scale 1/4"=1'-0"

June 1931